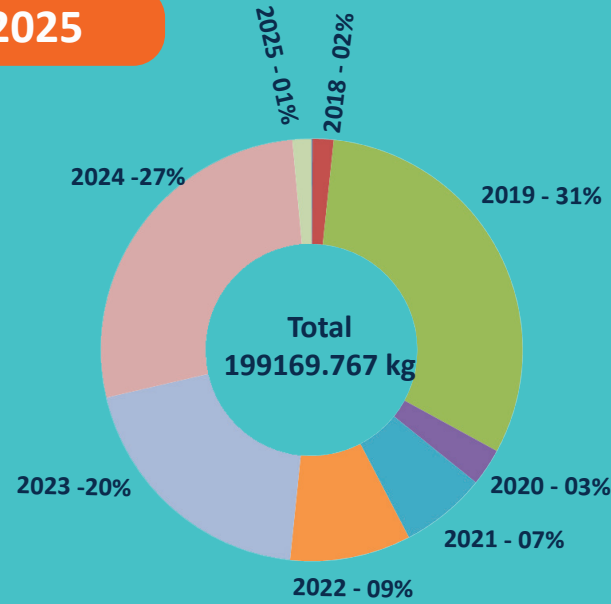
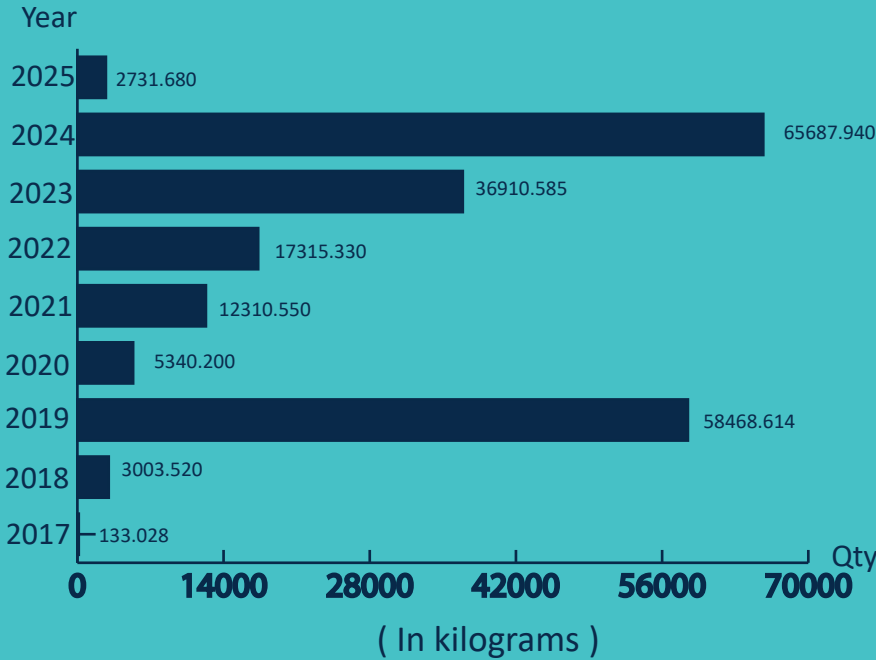


# SEIZURE OF KENDU LEAVES



Sri Lanka Navy

## SEIZURE OF KENDU LEAVES FROM 2017 - 2025



## 2025

- 07 Incidents Reported
- 2731.680 kg Apprehended
- 02 Suspects Apprehended

Qty (In kilograms)



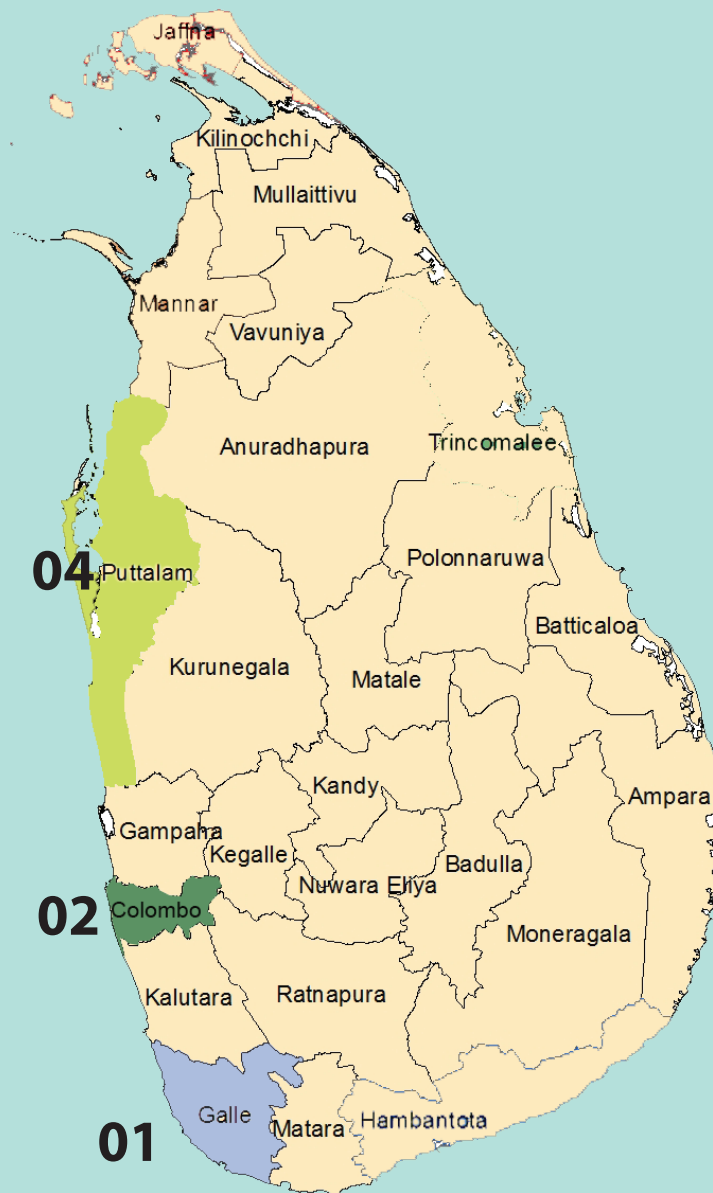
# AGE GROUP OF APPREHENDED SUSPECTS

\* Age not specified - 02

No of persons

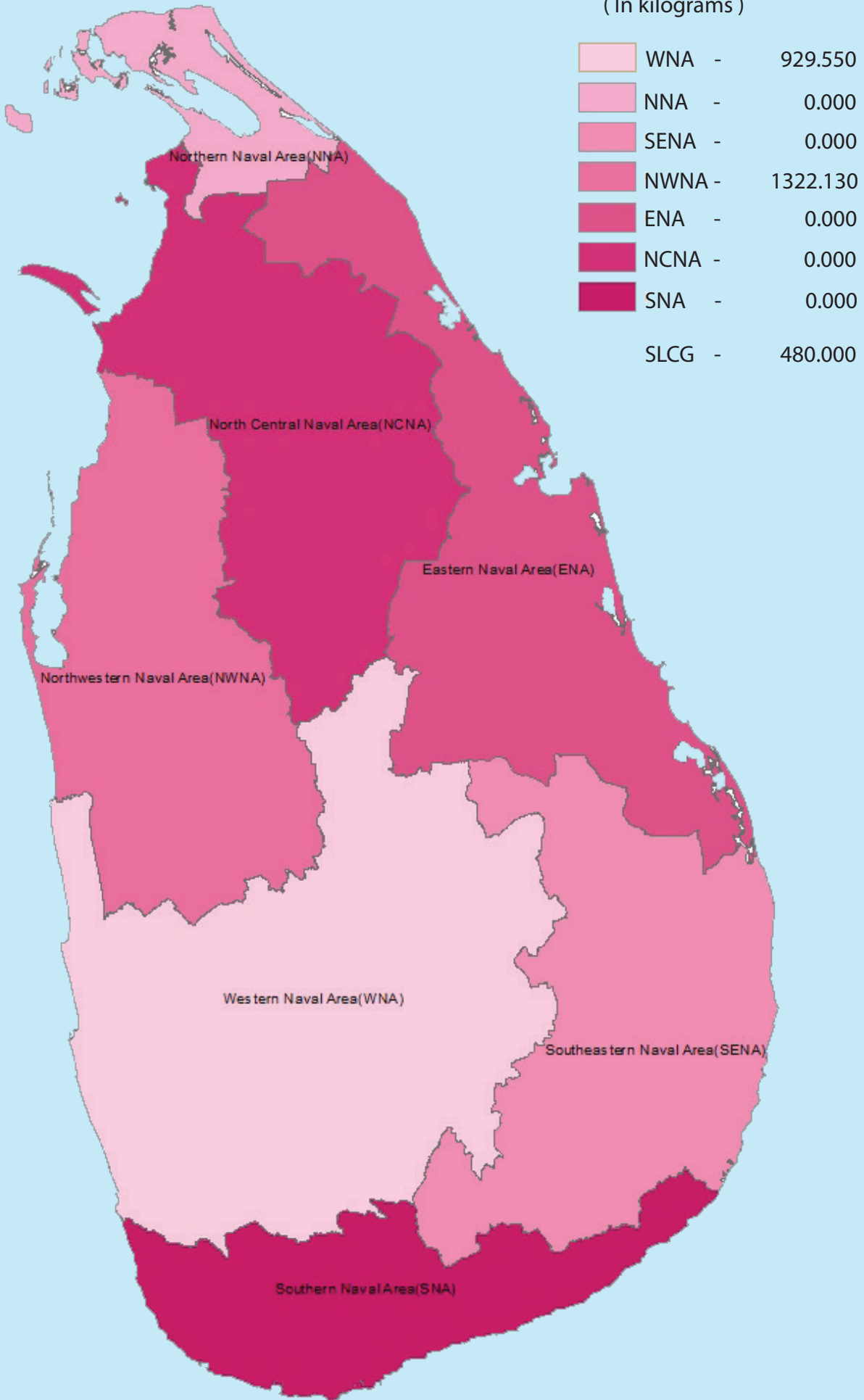


# DISTRICTS TO WHICH THE SUSPECTS BELONG



# AREA-WISE SEIZURE IN 2025

( In kilograms )



## NATIONALITY OF SUSPECTS

**FOREIGN**  
00



**LOCAL**  
07

## GENDER OF SUSPECTS



07



00

## VEHICLE/VESSEL SEIZED



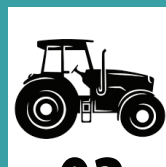
00



00



00



02



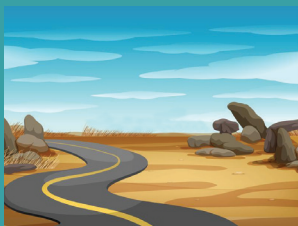
00



06

## WHERE THE INCIDENTS REPORTED

Land



02

Beach



00

Sea



05



**SEAOPS**  
Sri Lanka Navy